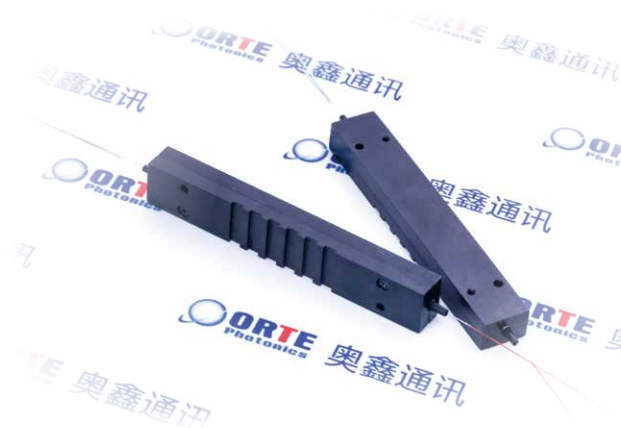


Multi-mode Pump Combiner (Nx1) / 多模泵浦合束器 (Nx1)



Features 特点

- High Pump Efficiency
- Wavelength Insensitive
- Custom Configurations Available

Applications 应用

Laser

Optical Specification 性能规范

| Configuration | Unit | 2×1 | 3×1 | 4×1 | 7×1 | 19×1 |
|-------------------------------|------|---|---|-----|------------------------------|----------------|
| Type | | Multi-mode Pump Combiner (MPC) | | | | |
| Pump Wavelength | nm | 800-1000 | | | | |
| Input Pump Fiber Type and NA | -- | 105/125 0.15/0.22NA or 200/220 0.22NA etc. | | | | |
| Output Pump Fiber Type and NA | -- | 105/125 0.22NA | X/125 DCF 200/220 0.22NA, 200/242 0.22NA | | X/125 DCF, 400/440 0.22NA | 400/440 0.22NA |
| Pump Efficiency | % | ≥90 (Typ.91) | ≥90 (Typ.93) | | ≥90 (Typ.91) | |
| Operating Temperature | Deg. | -5-75 | | | | |
| Storage Temperature | Deg. | -40-85 | | | | |
| Fiber Length | m | 1.00±0.10 | | | | |
| Max Pump Power per Port | W | 25 | | 150 | | |
| Package | mm | 3.5×54, 50×5×5, 75×12×8, 100×15×12, 150×15×12 | | | | |

Product Ordering Guide 产品订购指南

| XXXX | X | X | X | X | X | |
|-------------------------------------|---------------|-----------------|---------|-----------------------|------------------------|-------------------|
| MPC: Multi-mode Pump Combiner | Configuration | Pump Wavelength | Package | Input Pump Fiber Type | Output Pump Fiber Type | |
| | 1: 2×1 | | | 1: 105/125 0.15NA | 1: 105/125 0.22NA | |
| | 2: 3×1 | | | 1: 800-1000 | 2: 5/125 0.22NA | 2: X/125 DCF |
| | 3: 4×1 | | | 4: other | 3: other | 3: 200/220 0.22NA |
| | 4: 7×1 | | | 3: 75×12×8 | 4: 200/242 0.22NA | |
| | 5: 19×1 | | | 4: 100×15×12 | 5: other | |
| 6: other | 5: 150×15×12 | | | | | |
| | | 6: other | | | | |